
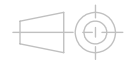
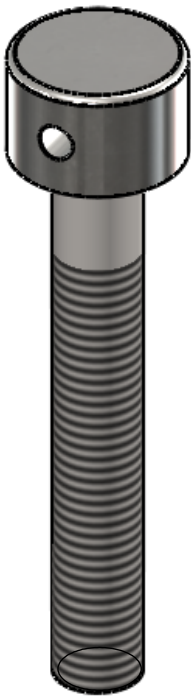
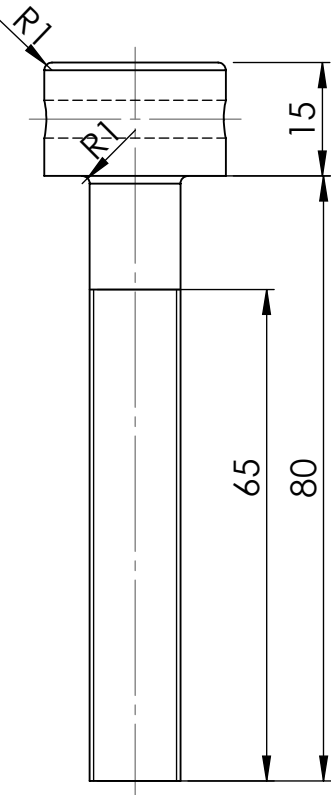
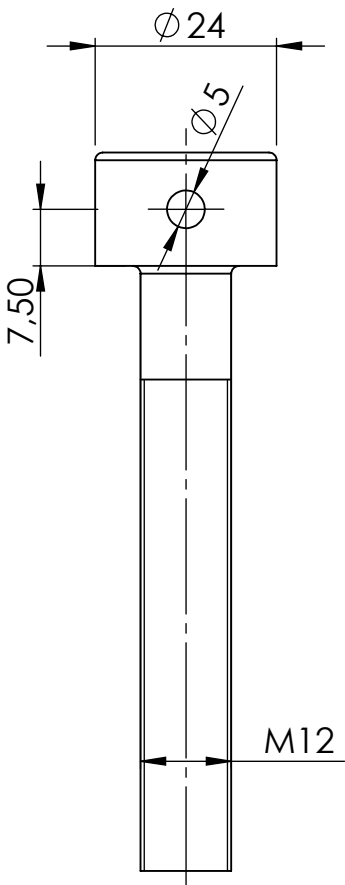


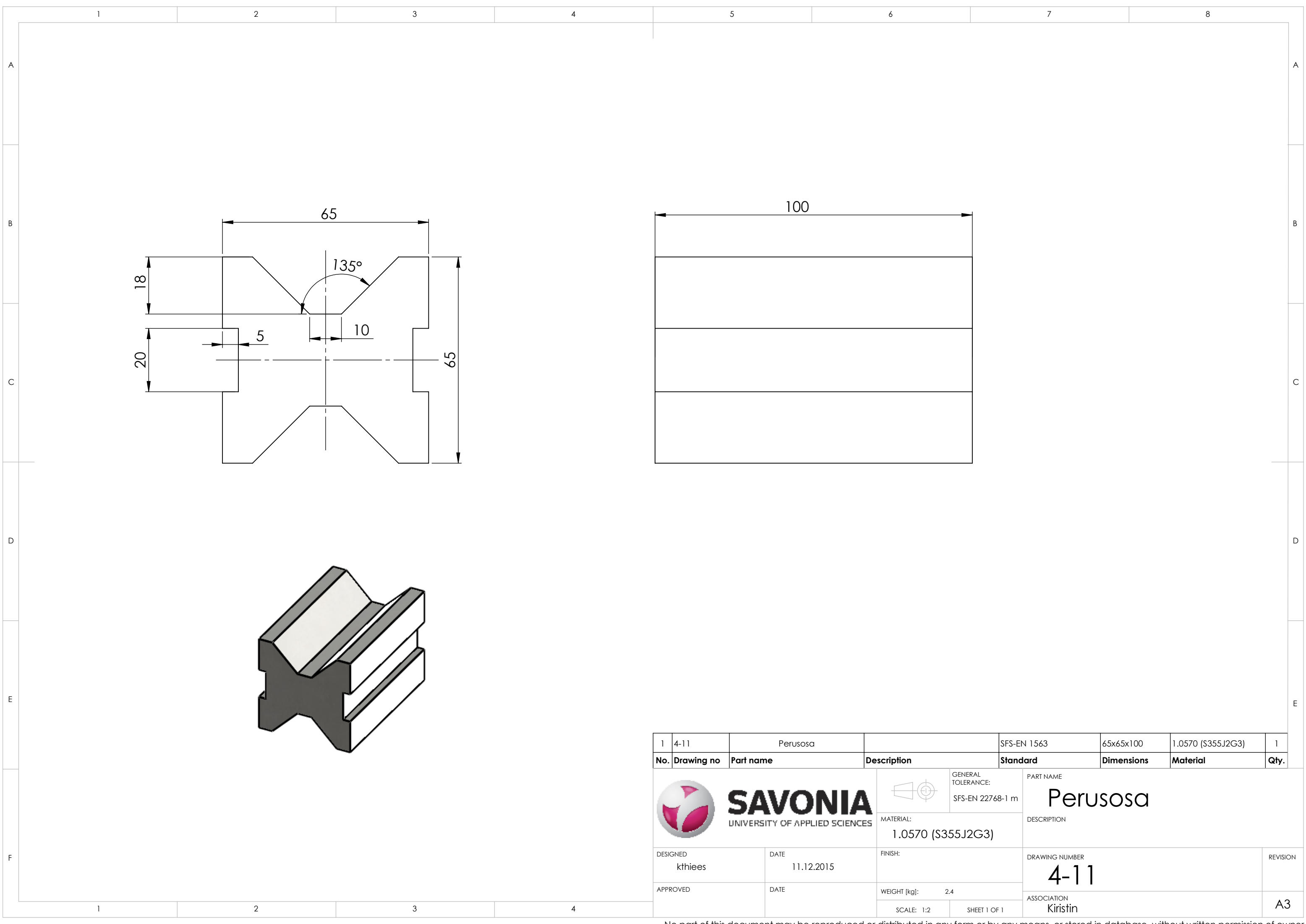
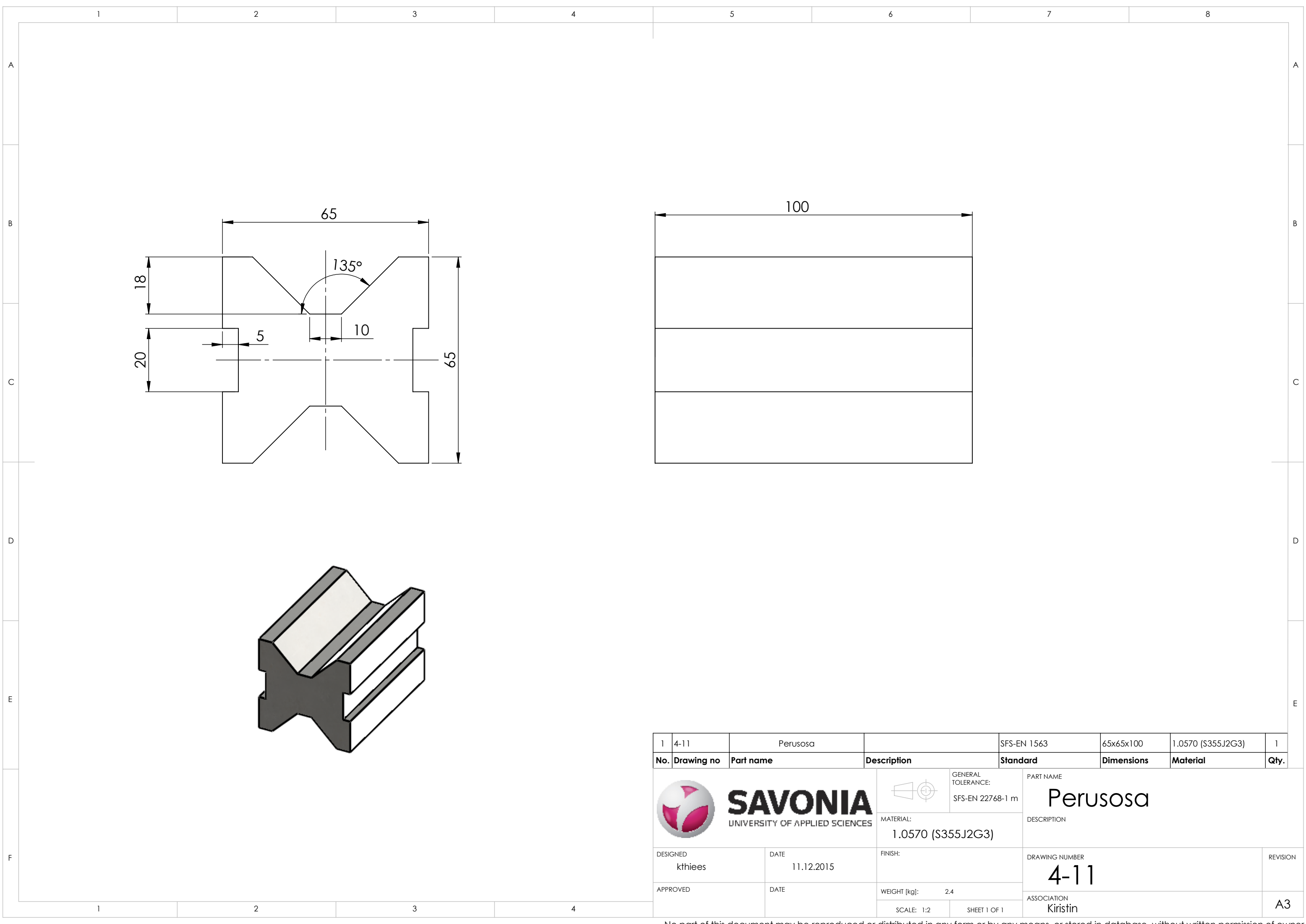
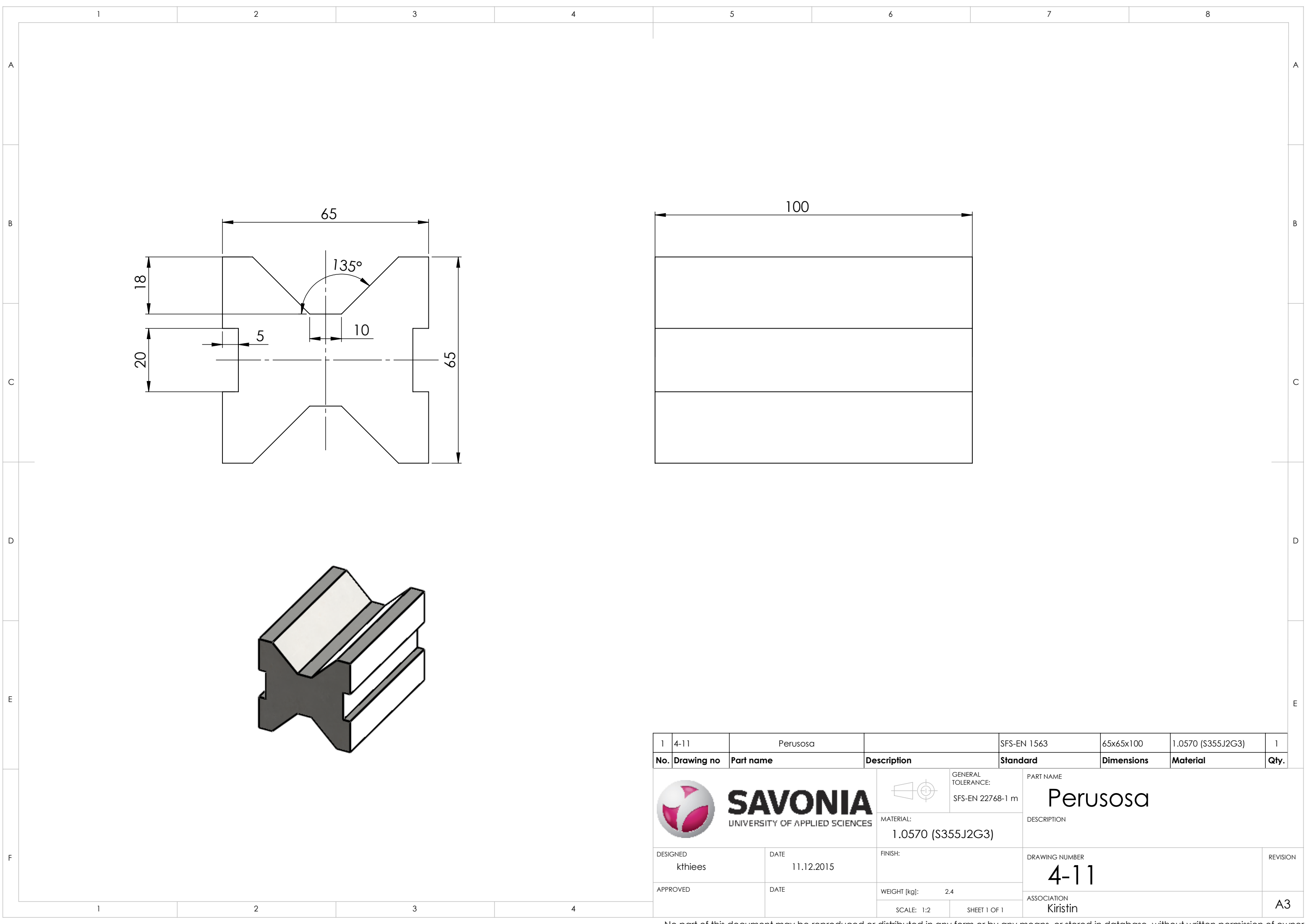


4	11-5	Vipu		SFS-EN 10088-1	5x100	1.0570 (S355J2G3)	1
3	4-12	Kierretappi		SFS-EN 1563	24x80	1.0570 (S355J2G3)	1
2	4-11	Ranka		SFS-EN 1563	80x80x20	1.0570 (S355J2G3)	1
1	4-11	Perusosa		SFS-EN 1563	65x65x100	1.0570 (S355J2G3)	1
No.	Drawing no	Part name	Description	Standard	Dimensions	Material	Qty.
			 GENERAL TOLERANCE:		PART NAME Kiristin		
DESIGNED kthiees			DATE 11.12.2015	MATERIAL: Material <not specified>		DESCRIPTION Kokoonpano	
APPROVED		DATE		FINISH:		DRAWING NUMBER 4-16	
				WEIGHT [kg]: 2.80		ASSOCIATION Kiristin	
				SCALE: 1:2		SHEET 1 OF 1	
						A3	



1	4-12	Kierretappi		SFS-EN 1563		24x80	1.0570 (S355J2G3)	1
No.	Drawing no	Part name	Description	Standard		Dimensions	Material	Qty.
 SAVONIA UNIVERSITY OF APPLIED SCIENCES				GENERAL TOLERANCE: SFS-EN 22768-1 m		PART NAME Kierretappi DESCRIPTION		
			MATERIAL: 1.0570 (S355J2G3)					
DESIGNED kthiees		DATE 11.12.2015	FINISH:		DRAWING NUMBER 4-12			REVISION
APPROVED		DATE	WEIGHT [kg]: 0.1		ASSOCIATION			A3
			SCALE: 1:1 SHEET 1 OF 1					



Technical drawing of a mechanical part, showing a cross-section and a 3D perspective view.

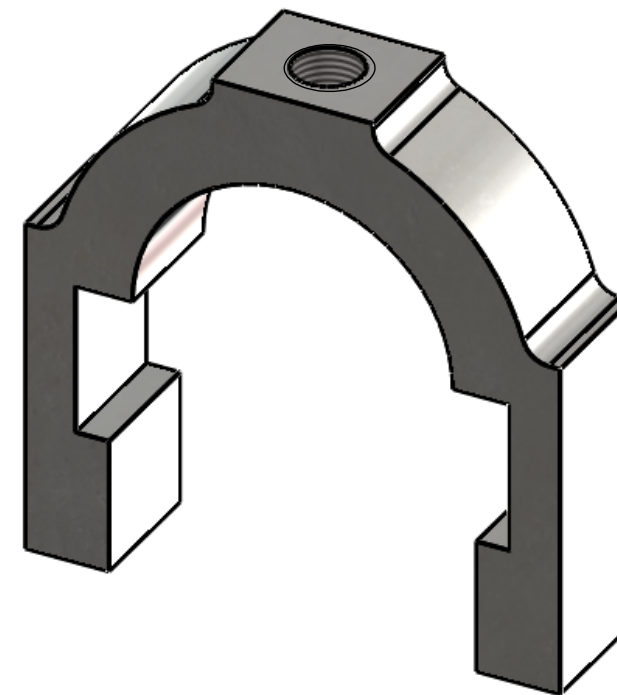
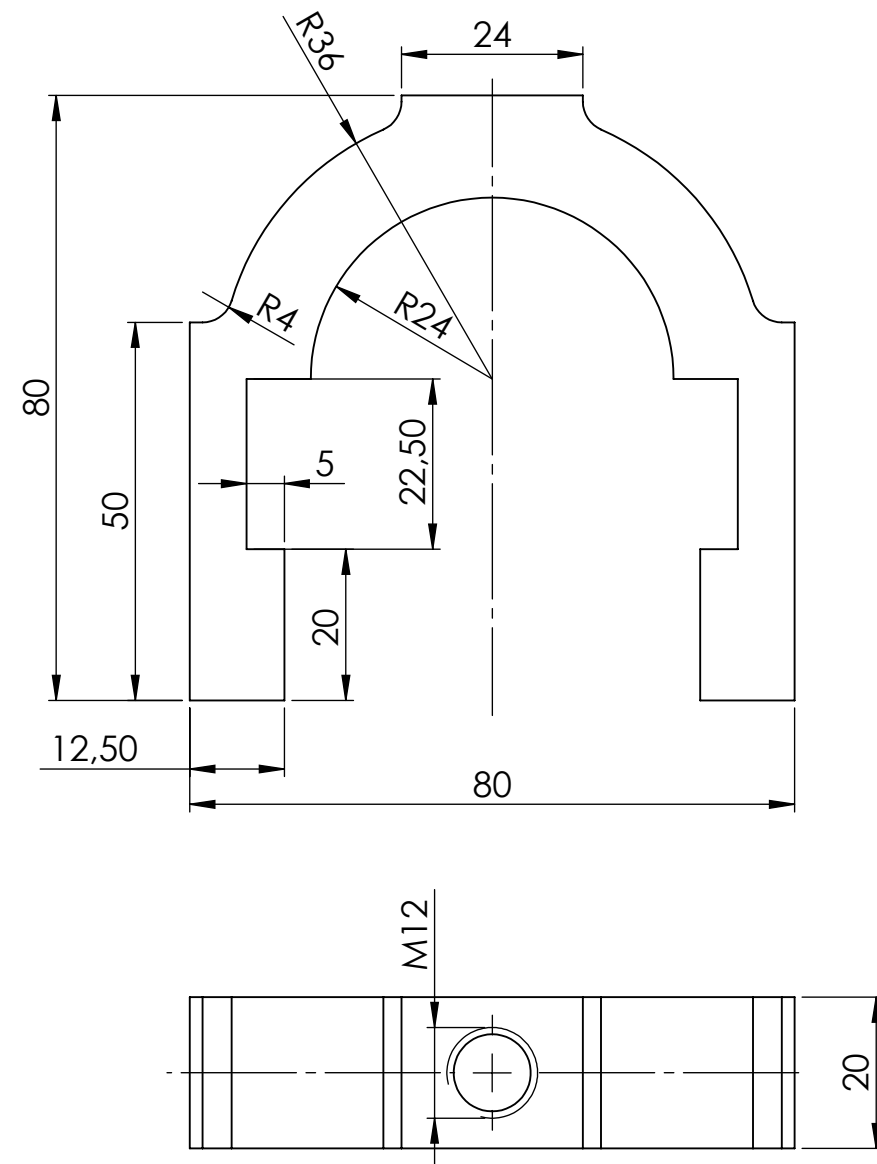
Dimensions (mm):



- Overall width: 100
- Overall height: 65
- Top flange width: 65
- Top flange thickness: 18
- Bottom flange width: 20
- Bottom flange thickness: 5
- Internal width: 10
- Internal angle: 135°

3D Perspective View:

The 3D view shows the part is a dark grey base with a white, V-shaped top flange. The base has a central slot and a small rectangular feature on the right side.

No.	Drawing no	Part name	Description	Standard	Dimensions	Material	Qty.
1	4-11	Perusosa		SFS-EN 1563	65x65x100	1.0570 (S355J2G3)	1
SAVONIA UNIVERSITY OF APPLIED SCIENCES				GENERAL TOLERANCE: SFS-EN 22768-1 m	PART NAME Perusosa		
DESIGNED kthiees		DATE 11.12.2015	MATERIAL: 1.0570 (S355J2G3)		DRAWING NUMBER 4-11		REVISION
APPROVED		DATE	WEIGHT [kg]: 2.4		ASSOCIATION Kiristin		A3
			SCALE: 1:2		SHEET 1 OF 1		



1	4-11	Ranka		SFS-EN 1563	80x80x20	1.0570 (S355J2G3)	1
No.	Drawing no	Part name	Description	Standard	Dimensions	Material	Qty.
 SAVONIA UNIVERSITY OF APPLIED SCIENCES			 GENERAL TOLERANCE: SFS-EN 22768-1 m	PART NAME <h1>Ranka</h1> DESCRIPTION			
			MATERIAL: 1.0570 (S355J2G3)				
DESIGNED kthiees	DATE 11.12.2015	FINISH:		DRAWING NUMBER <h1>4-11</h1>			REVISION
APPROVED	DATE	WEIGHT [kg]: 0.3					
		SCALE: 1:1		ASSOCIATION Kiristin			A3

